

TECHNICAL CHARACTERISTICS

1. General Characteristics

Dimension: 28.90L x 28.80W x 2.75H mm
 Weight: Approx. 2.03 g
 Mounting System: SMT Type (with post)
 Function: Push Push Type
 Durability: 5,000 cycles min.

2. Mechanical Characteristics

Insulation material: Thermoplastic, UL 94V-0
 RoHS Directive 2011/65/EU Compliant

3. Electrical Characteristics

Number of contacts: 9 pins
 Contact resistance: 100 mΩ max.
 Insulation resistance: 1000 MΩ min. / 500 VDC
 Switch type: Blade
 Operation: Normally Open

4. Solderability

Wave: Not applicable
 IR reflow: 260°C, 10 sec. Max.
 Manual soldering: 360°C, 3 sec. Max.

5. Environmental Characteristics

Operating Temperature: - 25°C ~ + 85°C
 Operating humidity: 10 % ~ 95 % RH
 Storage temperature: - 40°C ~ + 85°C
 Storage humidity: 10 % ~ 95 % RH

6. Pin Assignments

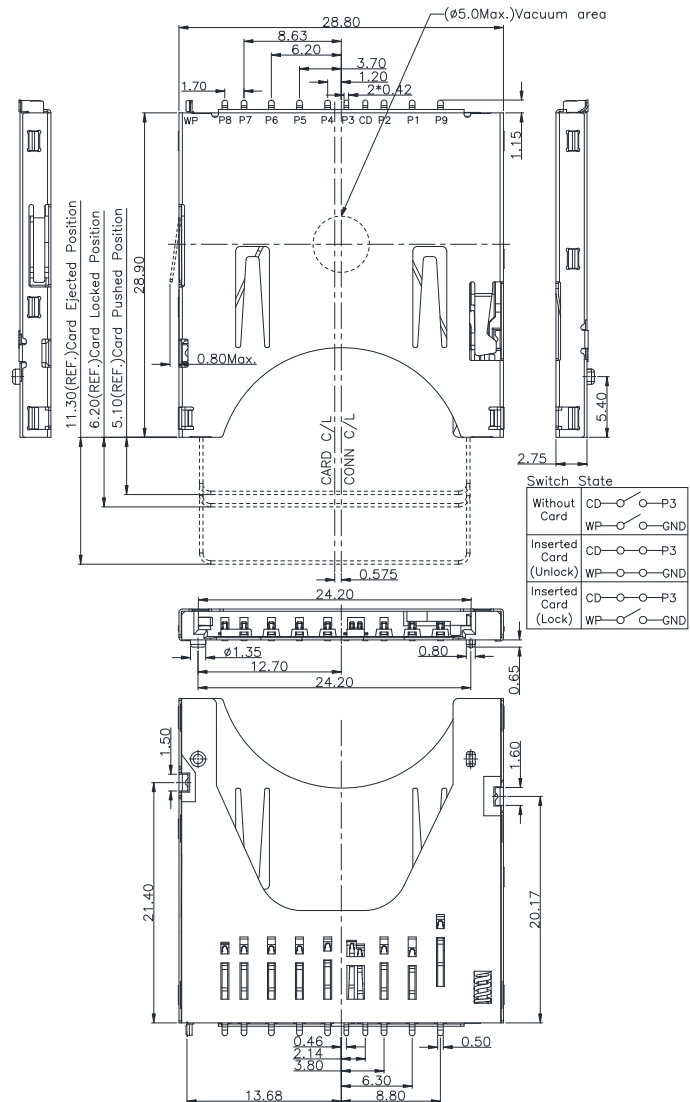
Pin	SD Mode	
	Name	Description
1	CD/DAT3	Card Detect/ Data Line (Bit 3)
2	CMD	Command/Response
3	VSS1	Supply voltage ground
4	VDD	Supply voltage
5	CLK	Clock
6	VSS2	Supply voltage ground
7	DAT0	Data Line (Bit 0)
8	DAT1	Data Line (Bit 1)
9	DAT2	Data Line (Bit 2)

H&V SD Card Connector

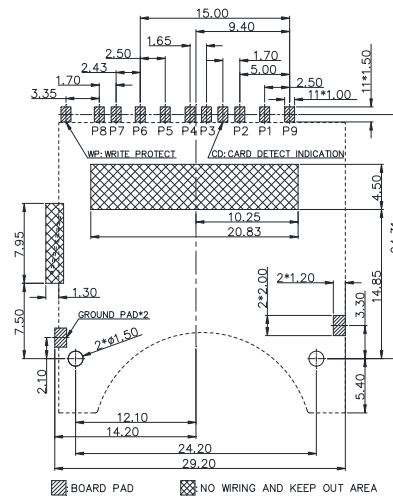
Model No.: MCA-S08

Revision: 1.0

Date: SEP. 06, 2017



Unit: mm; Tolerances: ±0.15 mm
Mechanical outline dimension



Unit: mm; Tolerances: ±0.05 mm
Reference dimension for PCB layout

Note:

- Coplanarity of solder pins 0.10mm max.
- Recommended thickness of solder paste > 0.15mm.

For further information, please contact:

Tel: +886 2 2662 8882(Rep.) Fax: +886 2 2662 7201~2 E-mail: taipei@hamburg.com.tw URL: <http://www.hamburg.com.tw>