

EMV & PCI & ESD Compliant

TECHNICAL CHARACTERISTICS

1. General Characteristics

Dimension: 56.10L x 40.00W x 6.20H mm
Weight: Approx. 15.6 g
Contact principle: Landing technology
Operating position: Shaft up / Down / Horizontal
Mounting System: SMT Type (with post)
Durability: 500,000 cycles min.

2. Mechanical Characteristics

Insulation material: Thermoplastic, UL 94V-0
RoHS Directive 2011/65/EU Compliant

3. Electrical Characteristics

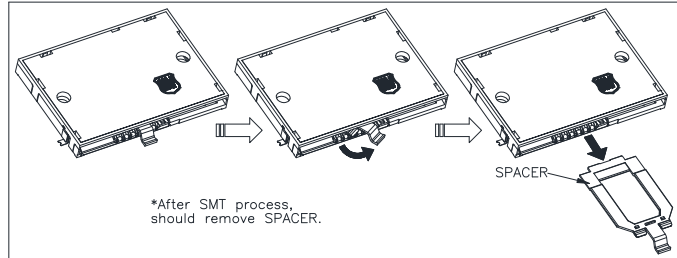
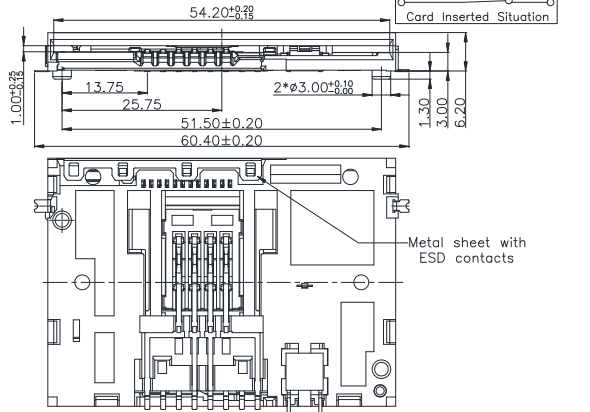
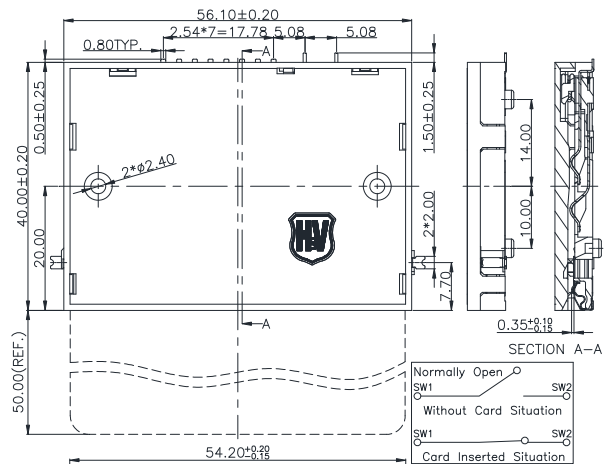
Number of contacts: 8 pins
Contact resistance: 50 mΩ typical, 100 mΩ max.
Insulation resistance: >1000 MΩ / 500 VDC
Switch type: Sealed
Operation: Normally Open

4. Solderability

Wave: Not applicable
IR reflow: 260°C, 10 sec. Max.
Manual soldering: 360°C, 3 sec. Max.

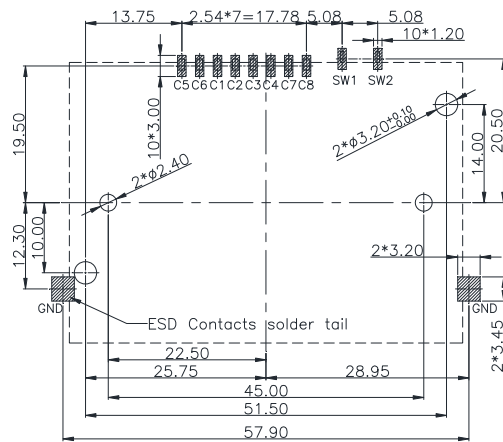
5. Environmental Characteristics

Operating temperature: - 40°C ~ + 85°C
Operating humidity: 10 % ~ 95 % RH
Storage temperature: - 40°C ~ + 85°C
Storage humidity: 10 % ~ 95 % RH



Unit: mm; Tolerances: ±0.15 mm

Mechanical outline dimension



Unit: mm; Tolerances: ±0.05 mm
Reference dimension for PCB layout

Note:

- 1. Coplanarity of solder pins 0.10mm max.
- 2. Recommended thickness of solder paste > 0.15mm.

H&V Smart Card Acceptor

Model No.: ICA-706 Type3

Revision: 1.1

Date: SEP. 04, 2018